

MODEL 297CDLRC HEAVY DUTY CHAIN DRIVEN LIVE ROLLER CURVE

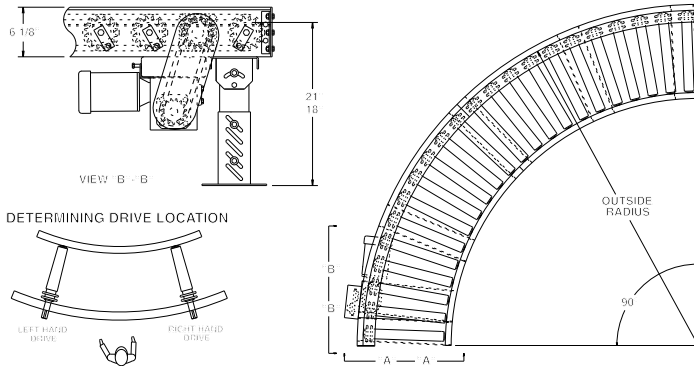
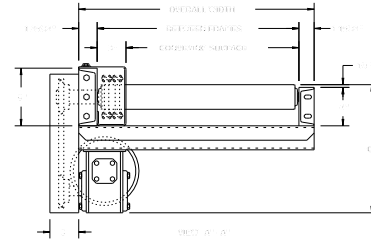


Model 297CDLRC features structural steel channel frames for conveying heavy unit loads. Heavy castings, drums and numerous other loads not requiring product orientation may be transported on this heavy duty chain driven live roller curve.

SPECIFY MODEL NUMBER PER EXAMPLE

297CDLRC-57-45-R

297CDLRC-(between frames)-(degree)-(left or right)



| UNIT | | | 90° | 45° | |
|------|----------------------|------------|------------|------------|------------|
| BF | CONV. SURFACE RADIUS | QTY. RLRs. | WT. (lbs.) | QTY. RLRs. | WT. (lbs.) |
| 15" | 12" | 7'-1-1/2" | 22 | 695 | 11 383 |
| 21" | 18" | 7'-1-1/2" | 22 | 768 | 11 422 |
| 27" | 24" | 7'-1-1/2" | 22 | 836 | 11 458 |
| 33" | 30" | 7'-1-1/2" | 22 | 895 | 11 491 |
| 39" | 36" | 7'-1-1/2" | 22 | 962 | 11 528 |
| 45" | 42" | 10'-3-3/4" | 32 | 1489 | 16 795 |
| 51" | 48" | 10'-3-3/4" | 32 | 1656 | 16 880 |
| 57" | 54" | 10'-3-3/4" | 32 | 1831 | 16 977 |
| 63" | 60" | 10'-3-3/4" | 32 | 2011 | 16 1074 |

SPECIFICATIONS

TREAD ROLLERS: 2-9/16" dia. x 7 ga. steel, model 297S with sprockets.*

CHAIN DRIVE: Roller to roller with No. 60 circular roller chain.

END DRIVE: Reversible drive, either side mounted or underside (specify). Main drive roller is supported by precision, heavy duty, lubricated, ball bearing units.

CHAIN GUARD: Chain drive is enclosed, top and bottom, along entire length of conveyor.

ROLLER CENTERS: 6" RC measured at outside radius of curve.

BED: 4" at 5.4 lbs. and 6" at 8.2 lbs. structural steel channel frame.

BEARINGS: Removable type, heavy duty, ball bearings, zinc plated, grease packed, labyrinth sealed.

MOTOR DRIVE: 3/4 HP, 230/460/3, 60 cycle, ODP right angle gear motor.

SPEED: 35 FPM, constant.

FLOOR SUPPORTS: SH-4 with underneath mounted drive adjustable 18" to 21" TOR. SH-1 with side mounted drive adjustable 10-1/2" to 12" TOR. Supports should be lagged to floor.

DRIVE LOCATION: Drive located on outside of curve. Specify right hand drive or left hand drive (drive hand determined with reference point located at outside of curve).

ELECTRICAL CONTROLS: Optional.

| HP @ 35 FPM | REDUCER | "C" |
|-------------|-------------|---------|
| 3/4 | RBW13340-02 | 13-1/8" |
| 1 | RBW13150-01 | 14-3/4" |
| 1-1/2 | RBW13150-02 | 14-3/4" |
| 2 | RBW13200-02 | 16-1/8" |

OPTIONAL EQUIPMENT

BED: Rollers on 4-1/2" centers on outside radius.

SPEED: Constant speed 1.5-60 FPM; DC variable speed; AC inverter variable speed. Other constant or variable speeds available. **NOTE: CAPACITY CHANGES WITH SPEED. 100 FPM MAX. WITH ROLLER-TO-ROLLER CHAIN DRIVE.**

MOTORS: Available through 3 HP in TEFC, explosion proof, dirty duty, 115/230/1, 575/3, etc.

FLOOR SUPPORTS: Other height supports, knee braces, casters, and polytier supports available. See pages 152-156.

*NOTE: Orientation of product may be affected because of straight rollers in curve. To maintain orientation, use tapered roller curve.



■ 4 week shipment