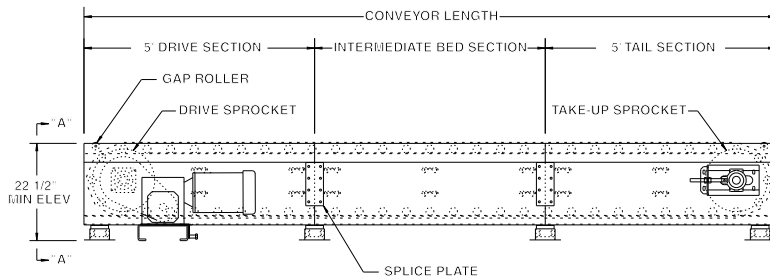
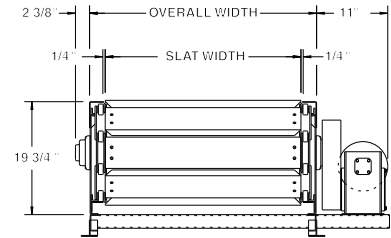


MODEL 608SL HEAVY DUTY SLAT CONVEYOR



Model 608SL slat conveyor conveys unstable, irregular shaped objects and those with problem bottom surfaces. It is commonly used in appliance and furniture handling and assembly line operations where product moves at a slow rate of speed through several operator work stations.



SLAT	25"	31"	37"	43"	49"
OAW	31"	37"	43"	49"	55"
OAL	UNIT WEIGHT (lbs.)				
10'	1889	2035	2181	2327	2472
20'	3023	3280	3537	3793	4049
30'	4157	4525	4893	5259	5626
40'	5291	5770	6249	6725	7203
50'	6425	7015	7605	8191	8730
60'	7559	8260	8961	9657	10357
70'	8693	9505	10317	11123	11934
80'	9827	10750	11673	12589	13511
90'	10961	11995	13029	14055	15088
100'	12095	13240	14385	15521	16665
#/FT.	113	124	135	147	157

SPECIFICATIONS

SLAT: 5-3/4" wide formed 7 ga. steel channel.

DRIVE: End side mount drive.

SPEED: 35 FPM, constant (maximum).

TAKE-UP: Screw type.

BED: 19-3/4" deep formed steel channel.

FLOOR SUPPORTS: Supports for elevations of 20" to 26-1/4" will be fixed height supports. Above 26-1/4", standard SH supports will be used.

MOTOR DRIVE: 3/4 HP, 230/460/3, 60 cycle, ODP right angle gear motor.

ROLLER CHAIN: Chain sizes will vary with length of conveyor.

ELECTRICAL CONTROLS: Optional.

OPTIONAL EQUIPMENT

SLAT: Apitong wood.

FLOOR SUPPORTS: Other height supports available; minimum 17" top of slat with floor mounted drive and 6" tooth sprocket.

CONVEYOR SPEED: Other constant or variable speed drives available.

MOTORS: Available through 5 HP in TEFC, explosion proof, dirty duty, 115/230/1, 575/3, etc.

ELECTRICAL CONTROLS: Manual start/stop push button switch; magnetic starter; photo eye; others available.



■ 6 week shipment