

# MISC. ACCESSORIES

## PNEUMATIC BRAKE ASSEMBLY



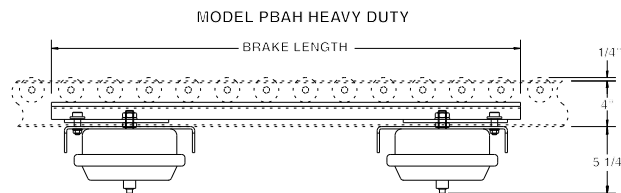
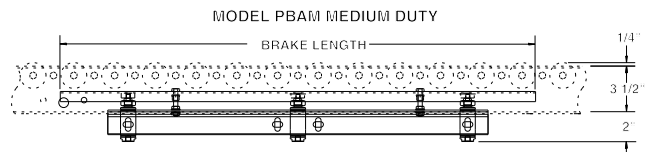
Model PBA pneumatic brake assembly is used to automatically brake rollers for flow control and also for indexing when combined with pneumatic stop. Model above for medium duty applications while model at right designed for heavy duty use. Both shown mounted in optional conveyor.

### PNEUMATIC BRAKES MODEL NUMBER

**PBAM-24**

PBA(medium or heavy duty\*)-(brake length)

\*Specify M for medium duty or H for heavy duty



■ 3 week shipment

### SPECIFICATIONS

**AIR CYLINDERS:** 1/2" stroke.

**SOLENOID VALVE:** Single, 110 volt.

**CONSTRUCTION:** 7 ga. formed with 5/16" pad.

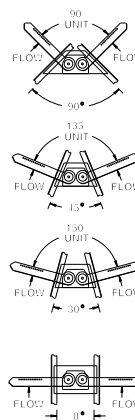
**LENGTH:** 24", 36" and 48" (specify).

**OPTIONAL:** Double solenoid and electrical controls.

## TRAFFIC COP



Traffic cops control merges allowing first carton striking an arm to pass. This action automatically locks the other arm in place until the first carton clears the arm. Model TC shown attached to optional conveyor.



### TRAFFIC COPS MODEL NUMBER

**TC-135-21-21**

TC-(degree of unit\*)-(left hand between frames)-  
(right hand between frames)

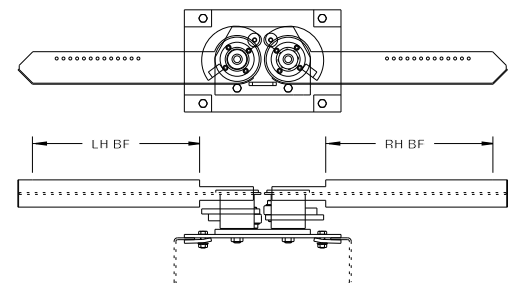
\*Specify 90°, 135°, 150° or 180°.

### SPECIFICATIONS

**CONSTRUCTION:** Arms constructed of 10 ga. HRS steel with 14 ga. face, welded for unit durability.

**UNIT ARC:** 90°, 135°, 150° and 180° available.

**TORQUE:** Minimum 5" - lb.; maximum per arm 2500" - lb.



■ 3 week shipment

