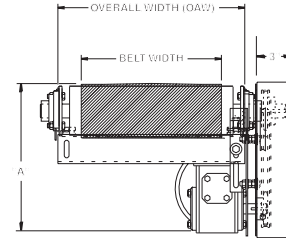


MODEL 450BOS BOX STYLE SLIDER BED BELT CONVEYOR W/ ROUND END PLATES

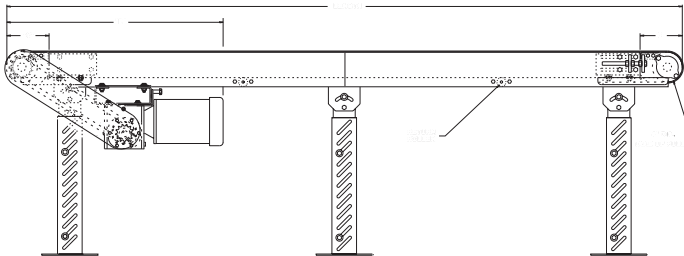
24 HOUR SHIPMENTS INCLUDE ALL 1-FOOT INCREMENTS 5'-0" TO 100'-0"



Conveyor shown with optional supports



Model 450BOS slider bed belt conveyor is one of the most popular and common means of transporting goods for packing, testing, inspecting and a variety of assembly line operations. 450BOS features a box style slider bed, ideal for workers stationed alongside the conveyor.



HP @ 60 FPM	"A" MAX		"B" MAX	
	4" DRV.	8" DRV.	4" DRV.	8" DRV.
1/3	13-13/16"	13-13/16"	29-3/32"	32-3/32"
1/2	13-13/16"	13-13/16"	29-3/32"	32-3/32"
3/4	14-3/16"	14-3/16"	29-23/32"	32-23-32"
1	14-1/2"	14-1/2"	30-15/32"	33-15/32"
1-1/2	15-9/16"	15-9/16"	32-19/32"	35-19/32"
2	16-7/16"	16-7/16"	33-19/32"	36-19/32"

SPECIFICATIONS

BELTING: PVC-120 black.

DRIVE PULLEY: 4" dia. with 1-3/16" dia. shaft or 8" dia. with 1-7/16" dia. shaft, both machine crowned and fully lagged, mounted in round style end plates.

TAIL PULLEY: 4" dia., machine crowned, with 1-3/16" dia. shaft, mounted in round style end plates.

END DRIVE: Allows one-direction (unit) operation; add optional center drive for reversible application.

SPECIFICATIONS

CONSTRUCTION: Brackets are 10 ga. HRS painted steel and bolt at end of powered conveyor to butt couplings. Gravity conveyor attaches to connector bracket.

TAKE-UP: Belt take-up provided at tail pulley with screw type unit.

BELT SPEED: 60 FPM, constant.

BED: 4-1/2" deep x 12 ga. box type construction with bed pan braces (30" OAW and above) and round style end plates.

BEARINGS: All pulley bearings are precision, heavy duty, lubricated, ball bearing units with cast iron housings.

POP-OUT ROLLERS: Mounts into slot on bracket for safety design. Use of connector bracket eliminates dangerous pinch points.

RETURN ROLLERS: 1.9" dia. x 16 ga. steel, model 196S, adjustable.

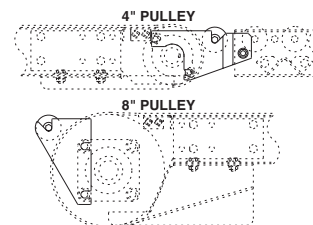
MOTOR DRIVE: 1/3 HP, 230/460/3, 60 cycle, ODP right angle gear motor.

ROLLER CHAIN: Drive pulley is driven by No. 50 roller chain for 1-1/2 HP or less and No. 60 chain on larger drives. Chain take-up provided on motor base.

ELECTRICAL CONTROLS: Optional.

CBOS-4-24

CBOS-(pulley diameter*)-(overall width)



WARNING

Prevent pinch points that exist when belt conveyors are permanently attached to other conveyors or equipment! Use connector brackets with safety pop out rollers shown above.



■ 24 hour shipment ■ 2 week shipment

SPECIFICATION TABLE

50'-0" lengths and under are equipped with 4" dia. drive pulley; over 50'-0" includes 8" dia. drive pulley

CONVEYOR LENGTH		5'	10'	15'	20'	25'	30'	35'	40'	50'	60'	70'	80'	90'	100'
BELT	OAW	Unit weights (lbs.)													
6"	10"	234	255	278	299	322	343	365	387	431	474	518	561	605	648
12"	16"	261	298	334	371	407	444	480	517	590	663	736	809	882	954
18"	22"	310	374	438	502	566	630	694	758	886	1014	1142	1270	1398	1525
24"	28"	365	443	521	599	677	755	833	911	1068	1224	1380	996	1692	1848
30"	34"	N/A	483	571	659	747	836	924	1012	1189	1365	1542	1718	1895	2070
36"	40"	N/A	539	644	749	854	959	1064	1168	1378	1588	1798	2007	2217	2426

OPTIONAL EQUIPMENT

BELTING: Black PVC ruff-top; 3-ply brown neoprene ruff-top; PVC-120 white food grade COS; PVC-150 black COS; 3-ply CN 40 urethane cover. Consult factory for other belting.

CENTER DRIVE: Reversible drive with integral belt take-up of 24". Specify location. Center drive option available on units 6'-0" long and above.

SIDE MOUNTED END DRIVE: Provides minimum conveyor height of 10" TOB (4" dia. drive pulley); 11" TOB (8" dia. drive pulley).

OVERHEAD END DRIVE: Provides minimum conveyor height of 6" TOB (4" dia. drive pulley); 10" TOB (8" dia. drive pulley).

AUXILIARY TAKE-UP: Provides 24" of belt take-up. Specify location. See Power Accessories.

SIDE TABLES: Available in 9", 15" and 21" widths (14 ga.) one or both sides. See Power Accessories.

FLOOR SUPPORTS: Supports, knee braces, casters and polytier supports available. See Conveyor Accessories.

NOSE-OVER: Provides smooth transition from incline to horizontal position. Single nose-over adjusts 0-20°; double nose-over adjusts 0-35°. See Power Accessories.

UNDERTRUSSED BED: Available to provide clearance underneath unit at bed joint locations. Specify location for undertrussing and desired clearance underneath unit. Consult factory.

CEILING HANGERS: 5/8" dia. threaded rod with hardware to attach rods to conveyor. Provides 6' clearance between ceiling and TOB (furnished in place of floor supports). See Conveyor Accessories.

MOTORS: Available through 3 HP in TEFC, explosion proof, dirty duty, brake motor, 115/230/1, 575/3, etc.

GUARD RAILS: 1-3/4" x 1" formed

channel (model GC), adjusts horizontally to 10" wider than belt and vertically to 6" above belt; formed steel fixed (model FSG in 2", 4", 6", 8", 12", and 18" heights; fixed channel (model FC); 1-1/2" angle (model GA1-1/2). See Conveyor Accessories.

BELT SPEED: Constant speed 10-120 FPM; DC variable speed; AC inverter variable speed. Other constant or variable speeds available. **NOTE: CAPACITY CHANGES WITH SPEED.**

ELECTRICAL CONTROLS: Magnetic starter (one direction or reversible); One direction manual starter; Momentary start/stop push button station; Forward/reversing /stop push button station. Mounting and pre-wiring for units up to 12' long.



4" END DRIVE WITH ROUND END PLATES